

# TIPS OF THE TRADE

## HOW DO I SELECT THE CORRECT SIZE ABRASIVE?

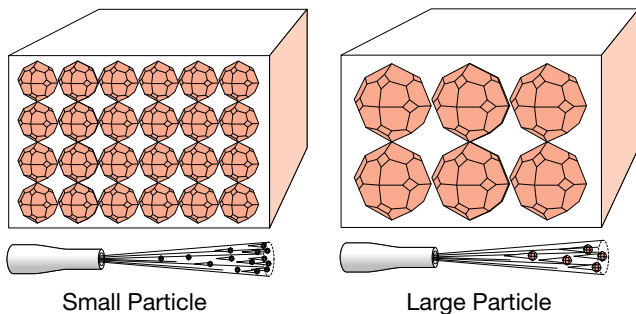


**THE CORRECT GRADE OF ABRASIVE IS THE FINEST ONE THAT CLOSEST MATCHES THE THICKNESS OF THE CONTAMINANT BEING REMOVED.**

### FACT 1

Abrasive blasting works by using the impact of each grain of sand hitting the surface to “chip off” the unwanted material. Therefore the more impacts you can get the quicker the job gets done.

More grains per volume of abrasive = more impacts = more production.



### FACT 2

The relationship between the abrasive particle size and contaminant thickness requiring removal needs to be considered to ensure maximum productivity.

Fast contaminant removal is dependent on the abrasive particle being of sufficient size to cut through the contaminant and impact directly on the substrate.

