

ENCLOSED INDUSTRIAL BOOTH



APPLICATIONS

BlastOne's Enclosed Industrial Booths are developed to produce a high quality finish in an extremely efficient manner. Air flows in through the filtered double entry doors in the front of the booth, passes through the booth's working area, and into the filtered exhaust chamber located in the rear of the booth. This filtered exhaust air is drawn through the exhaust plenum and discharged upward into the atmosphere through the exhaust stack. To make efficient use of your valuable floor space, BlastOne's Enclosed Industrial Booths are available in four heights to accommodate your needs. Custom sizes are also available.

KEY FEATURES

HEAVY DUTY CONSTRUCTION

Booths are constructed from 18-gauge, prime quality galvanized steel and are engineered with corresponding support structure as booth dimensions demand. All panels and support members are precision punched for easy nut and bolt assembly.

SUPERIOR DOORS

Product doors are field hung on slotted hinges to facilitate adjustment on two axes for uneven floors. Our standard 36" wide man door, with built in observation window, is built into pre-assembled heavy frame.

INDUSTRY-LEADING LIGHTING

Booths receive bright, even illumination from four-tube, 48" long, 32 watt, fluorescent light fixtures. BlastOne light fixtures are ETL listed (Class 1 Division 2, Group A, B, C, D and Class 2 division 2, Group F and G.) and are supplied with a multi-voltage ballast to accept any voltage between 110vac and 277vac. Bulb are pre-installed at the factory and tested prior to shipment.

EFFICIENT FANS & MOTORS

Quality brand-name tubeaxial fans and motors

AIR SOLENOID VALVE

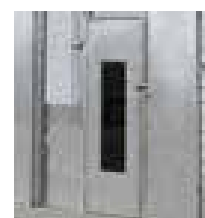
Interlocked to the exhaust fan and air supply for the spray application equipment

MEETS QUALITY PERFORMANCE STANDARDS

Spray booths manufactured by BlastOne meet and/or exceed all applicable OSHA and NFPA regulations.



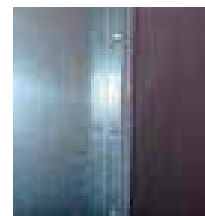
UL & ETL LISTED
CONTROL PANEL



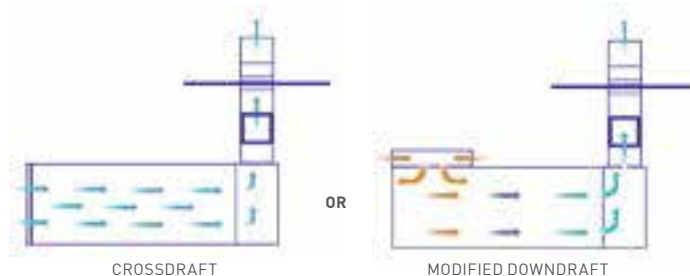
WINDOWED PERSONNEL
ACCESS DOORS



INDUSTRY-LEADING
LIGHT LEVELS



5/16" BOLTS WITH
SERRATED LOCK NUT



OPTIONS

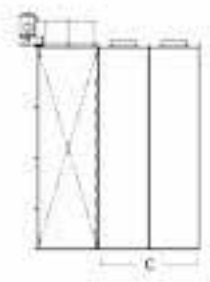
- LED lighting
- Air replacement units and intake chambers can be added
- 2-Stage filtration, 3-stage filtration, NESHAP filtration
- Reduced air flows for automatic spray operations
- Durable powder coated white option available
- Control panel and other electrical components can be purchased separately
- Conveyor and crane slots/openings available
- Roll-up, bifold or trifold doors
- Exhaust ductwork

SELECTING A BOOTH SIZE

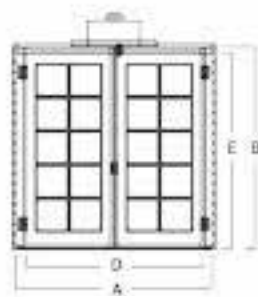
BlastOne can design and build spray booths in a variety of sizes and configurations. Although our team can engineer a custom booth to fit your needs, below are standard sizes that are quickly available to you.

MODEL NUMBER	INTERIOR DIMENSIONS			EXTERIOR DIMENSIONS			CLEAR DOOR OPENING			QTY. LIGHTS	FILTERS EXHAUST	FAN DIAMETER	FAN HP	SCFM @ 1/2" SP
	WIDTH	HEIGHT	LENGTH	WIDTH	HEIGHT	LENGTH	WIDTH	HEIGHT	QTY					
EIB-10-07-05-00-S	10'-0"	7'-0"	5'-0"	10'-4"	7'-2"	7'-10"	9'-4"	6'-10.5"	1	Filtered	2	20	24"	2HP 7,000
EIB-12-07-07-00-S	12'-0"	7'-0"	7'-0"	12'-4"	7'-2"	9'-10"	11'-4"	6'-10.5"	1	Filtered	2	24	24"	3HP 8,400
EIB-14-07-07-00-S	14'-0"	7'-0"	7'-0"	15'-0"	7'-6"	10'-8"	13'-4"	6'-10.5"	1	Filtered	2	32	30"	3HP 9,800
EIB-16-07-07-00-S	16'-0"	7'-0"	7'-0"	17'-0"	7'-6"	10'-8"	13'-4"	6'-10.5"	1	Filtered	2	36	30"	3HP 11,200
EIB-18-07-07-00-S	18'-0"	7'-0"	7'-0"	19'-0"	7'-6"	10'-8"	13'-4"	6'-10.5"	1	Filtered	3	40	30"	3HP 12,600
EIB-20-07-07-00-S	20'-0"	7'-0"	7'-0"	21'-0"	7'-6"	10'-8"	13'-4"	6'-10.5"	1	Filtered	4	44	30"	5HP 14,000
EIB-10-08-05-00-S	10'-0"	8'-0"	5'-0"	10'-4"	8'-2"	7'-10"	9'-4"	7'-10.5"	1	Filtered	2	20	24"	3HP 8,000
EIB-12-08-07-00-S	12'-0"	8'-0"	7'-0"	12'-4"	8'-2"	10'-4"	11'-4"	7'-10.5"	1	Filtered	2	24	30"	3HP 9,600
EIB-14-08-07-00-S	14'-0"	8'-0"	7'-0"	15'-0"	8'-6"	10'-8"	13'-4"	7'-10.5"	1	Filtered	2	32	30"	3HP 11,200
EIB-16-08-07-00-S	16'-0"	8'-0"	7'-0"	17'-0"	8'-6"	10'-8"	13'-4"	7'-10.5"	1	Filtered	2	36	30"	5HP 12,800
EIB-18-08-07-00-S	18'-0"	8'-0"	7'-0"	19'-0"	8'-6"	10'-8"	13'-4"	7'-10.5"	1	Filtered	3	40	30"	5HP 14,400
EIB-20-08-07-00-S	20'-0"	8'-0"	7'-0"	21'-0"	8'-6"	11'-8"	13'-4"	7'-10.5"	1	Filtered	4	44	36"	5HP 16,000
EIB-10-10-05-00-S	10'-0"	10'-0"	5'-0"	10'-4"	10'-2"	8'-4"	9'-4"	9'-10.5"	1	Filtered	2	25	30"	3HP 10,000
EIB-12-10-07-00-S	12'-0"	10'-0"	7'-0"	12'-4"	10'-2"	10'-4"	11'-4"	9'-10.5"	1	Filtered	2	30	30"	3HP 12,000
EIB-14-10-07-00-S	14'-0"	10'-0"	7'-0"	15'-0"	10'-6"	10'-8"	13'-4"	9'-10.5"	1	Filtered	2	40	30"	5HP 14,000
EIB-16-10-07-00-S	16'-0"	10'-0"	7'-0"	17'-0"	10'-6"	11'-8"	13'-4"	9'-10.5"	1	Filtered	2	45	36"	5HP 16,000
EIB-18-10-07-00-S	18'-0"	10'-0"	7'-0"	19'-0"	10'-6"	11'-8"	13'-4"	9'-10.5"	1	Filtered	3	50	36"	5HP 18,000
EIB-20-10-07-00-S	20'-0"	10'-0"	7'-0"	21'-0"	10'-6"	11'-8"	13'-4"	9'-10.5"	1	Filtered	4	55	42"	5HP 20,000
EIB-10-12-05-00-S	10'-0"	12'-0"	5'-0"	10'-4"	12'-2"	8'-4"	9'-4"	11'-10.5"	1	Filtered	2	30	30"	3HP 12,000
EIB-12-12-07-00-S	12'-0"	12'-0"	7'-0"	12'-4"	12'-2"	10'-4"	11'-4"	11'-10.5"	1	Filtered	2	36	30"	5HP 14,400
EIB-14-12-07-00-S	14'-0"	12'-0"	7'-0"	15'-0"	12'-6"	11'-8"	13'-4"	11'-10.5"	1	Filtered	2	48	36"	5HP 16,800
EIB-16-12-07-00-S	16'-0"	12'-0"	7'-0"	17'-0"	12'-6"	11'-8"	13'-4"	11'-10.5"	1	Filtered	2	54	42"	5HP 19,200
EIB-18-12-07-00-S	18'-0"	12'-0"	7'-0"	19'-0"	12'-6"	11'-8"	13'-4"	11'-10.5"	1	Filtered	3	60	42"	5HP 21,600
EIB-20-12-07-00-S	20'-0"	12'-0"	7'-0"	21'-0"	12'-6"	11'-8"	13'-4"	11'-10.5"	1	Filtered	4	66	42"	7.5HP 24,000
Ref. Key	A	B	C	D		E								

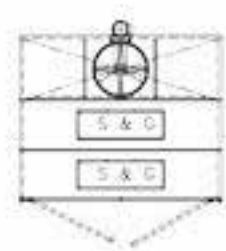
Alternative Configuration: Pressurized Modified Downdraft (MD)



LEFT SIDE ELEVATION



END VIEW



PLAN VIEW