



BLASTONE

MISTBLASTER™

ADDS DUST SUPPRESSION CAPABILITIES
TO YOUR DRY POT SET-UP





MistBlaster 4-In-1



SAY GOODBYE TO DUST AND A SLUDGY, MUDDY, BLAST POT

WHAT IS MISTBLASTING?

It is NOT a limited purpose specialized machine that will sit around most days gathering dust.

- ▶ It's NOT SLURRY BLASTING
- ▶ It's NOT WATER RINGS
- ▶ It's NOT MESSY

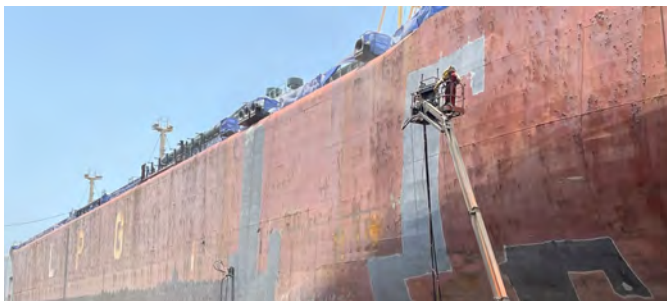
It IS a fully functional dry blast pot with a simple yet capable water injection system.

WHAT MAKES THE MISTBLASTER UNIQUE?

- ▶ Water vapor is introduced into the blast hose only after the abrasive exits the metering valve
- ▶ Full control over the amount of water used, down to 1 pint per minute (vs 2 gallons) during mist blasting.
- ▶ Easily switch between 4 applications: dry blast, mist blast, wash down, blow down.



4 IMMEDIATE BENEFITS OF SUPPRESSING DUST



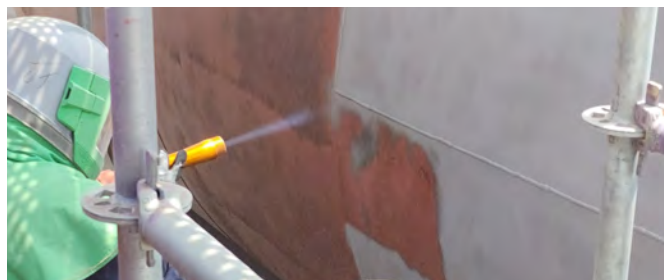
1 Improves visibility and safety for work crew



2 Reduces nuisance dust complaints from neighboring trades, houses, and businesses



3 Reduces need and expense for containment



4 Keeps your crew physically cleaner

NEVER DEAL WITH A BIG SLOPPY MESS... ON THE GROUND OR INSIDE YOUR POT



EASILY SWITCH BETWEEN 4 FUNCTIONS

- ▶ Mist Blast
- ▶ Dry Blast
- ▶ Wash Down
- ▶ Blow Down



AVAILABLE FOR RENT, PURCHASE OR RETROFIT



POT STAYS DRY

Water vapor is introduced to the abrasive in the blast hose, not the pot. Your pot stays dry!



AVAILABLE IN 3 DIFFERENT PACKAGES

- ▶ Single Outlet Blast Pot (6.5 cu ft)
- ▶ Combo Skid with Air Dryer
- ▶ 4-Outlet Mega MistBlaster



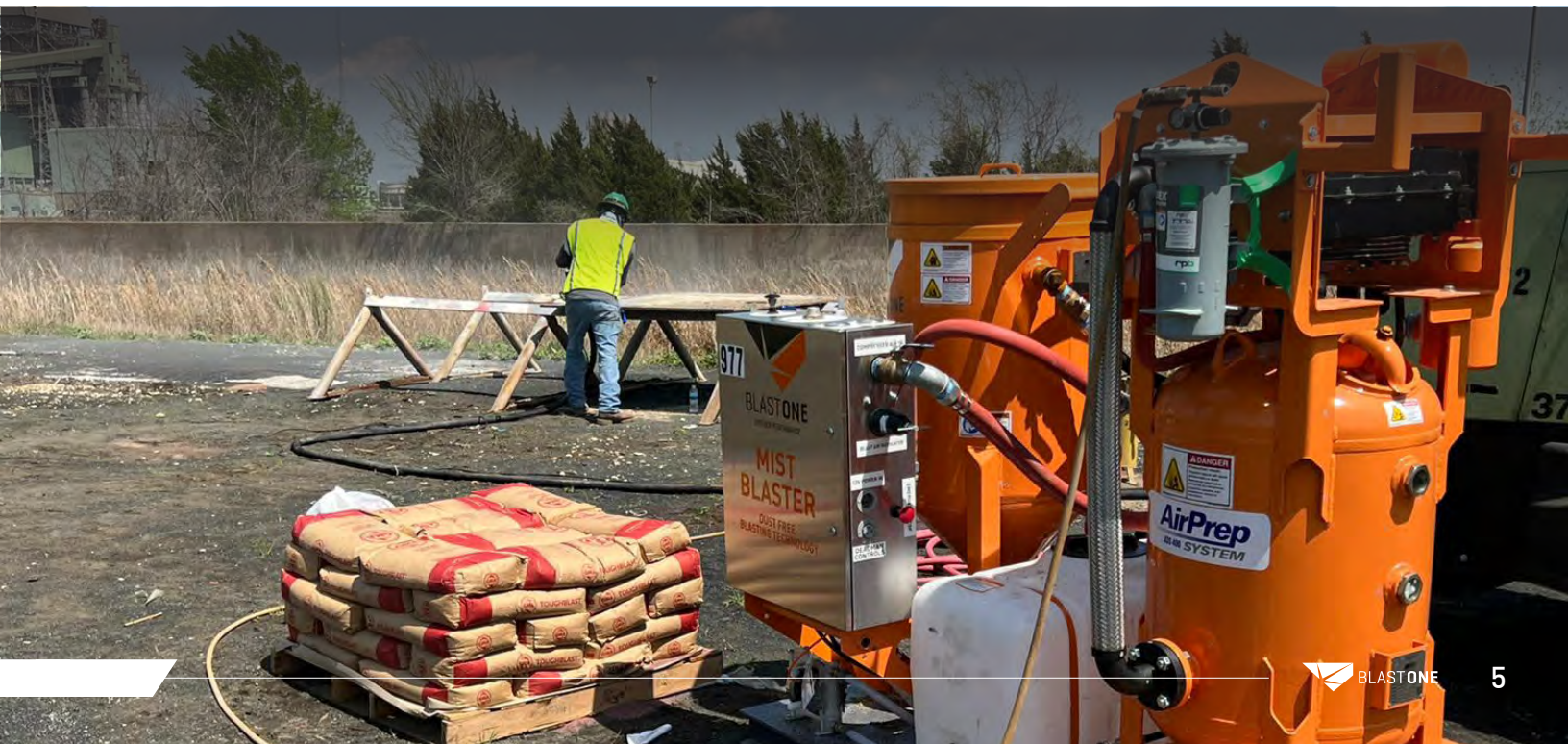
USES LESS THAN 1 PINT

per minute vs older systems that waste up to 2 gallons (7.5 litres) per minute.



SIMPLE TO USE

1 lever and valve allows you to switch back and forth easily



VERSATILITY FOR ALL SCENARIOS



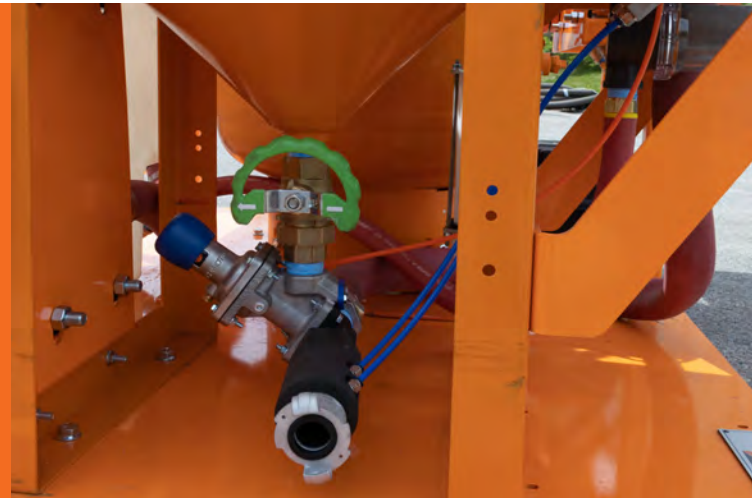
1 LEVER CONTROLS 4 FUNCTIONS

- ▶ Mist Blast
- ▶ Dry Blast
- ▶ Wash Down
- ▶ Blow Down



KEEPING YOUR ABRASIVE DRY

Water vapor is introduced after the metering valve, allowing for both dry and mist blasting applications for each operator all day long!



4 INDEPENDENT BLASTERS*

Each blaster can independently use any of the 4 available functions without interfering with the other blasters.

EXAMPLE:

2 blasters dry blast inside tank

... WHILE...

2 blasters mist blast outside tank

**When using the Mega MistBlaster*

MISTBLASTER SELECTION GUIDE

MistBlaster Technology has been configured into a family of products - built with your needs in mind. Depending on your project, BlastOne has you covered.

All units are available for purchase or rental.



| MODEL | SINGLE OUTLET BLAST POT | COMBO SKID - ADS AIR DRYER | MEGA MISTBLASTER |
|-------------------------|--|--|--|
| Part Number | MB25000 | MB60000 | MB70000 |
| Pot Volume | 6.5 cu ft | 6.5 cu ft | 160 cu ft |
| Water Tank | N/A | 50 gal | N/A |
| Air Dryer | No | Yes | No |
| Breathing Air Included | Optional | Optional | No |
| Outlets/Operators | 1 | 1 | 4 |
| Input Power | Dual Power (Electric & Pneumatic) | Dual Power (Electric & Pneumatic) | Electric |
| Max Compressed Air Flow | 950 cfm | 950 cfm | 1600 cfm |
| Max Blast Pressure | 150 psi | 150 psi | 150 psi |
| Water Dose | 0-2 gpm (0-7.5 lpm) | 0-2 gpm (0-7.5 lpm) | 0-2 gpm (0-7.5 lpm) |
| Dimensions | 42" x 48" x 58" (106cm x 122cm x 147cm) | 72" x 47" x 60" (182cm x 120cm x 152cm) | 109" x 99" x 125" (277cm x 251cm x 318cm) |
| Weight - Dry | 548 lbs (249 kg) | 2050 lbs (930 kg) | 5500 lbs (2495 kg) |

MISTBLASTER™ SINGLE OUTLET BLAST POT

6.5 cuft Blast Machine

Blast vessel will hold over 700 lbs (317 kg) of Garnet abrasive, enough to last 1¼ to 1¾ hours of continual blasting.

4-way Switch

Easily switch between dry blast, mist blast, wash down or blow down modes.

Dual Power Controlled

With electric or pneumatic controls, the MistBlaster is compatible with any deadman accessories you have.

Abrasive Metering Valve

Using the TeraValve gives you maximum control of your abrasive flow.

Blowdown/Exhaust

For fast and quiet depressurization of the blast machine to refill quickly and continue blasting.

Pressure Gauge

Allows you to monitor your blast pressure for maximum productivity.

Emergency Stop

Quick shutoff for enhanced safety.

Water Dial Control

Precision needle valve for controlling the mist.

Incoming Water Filter

Filters out any debris that may be in your water - keeping you blasting longer.

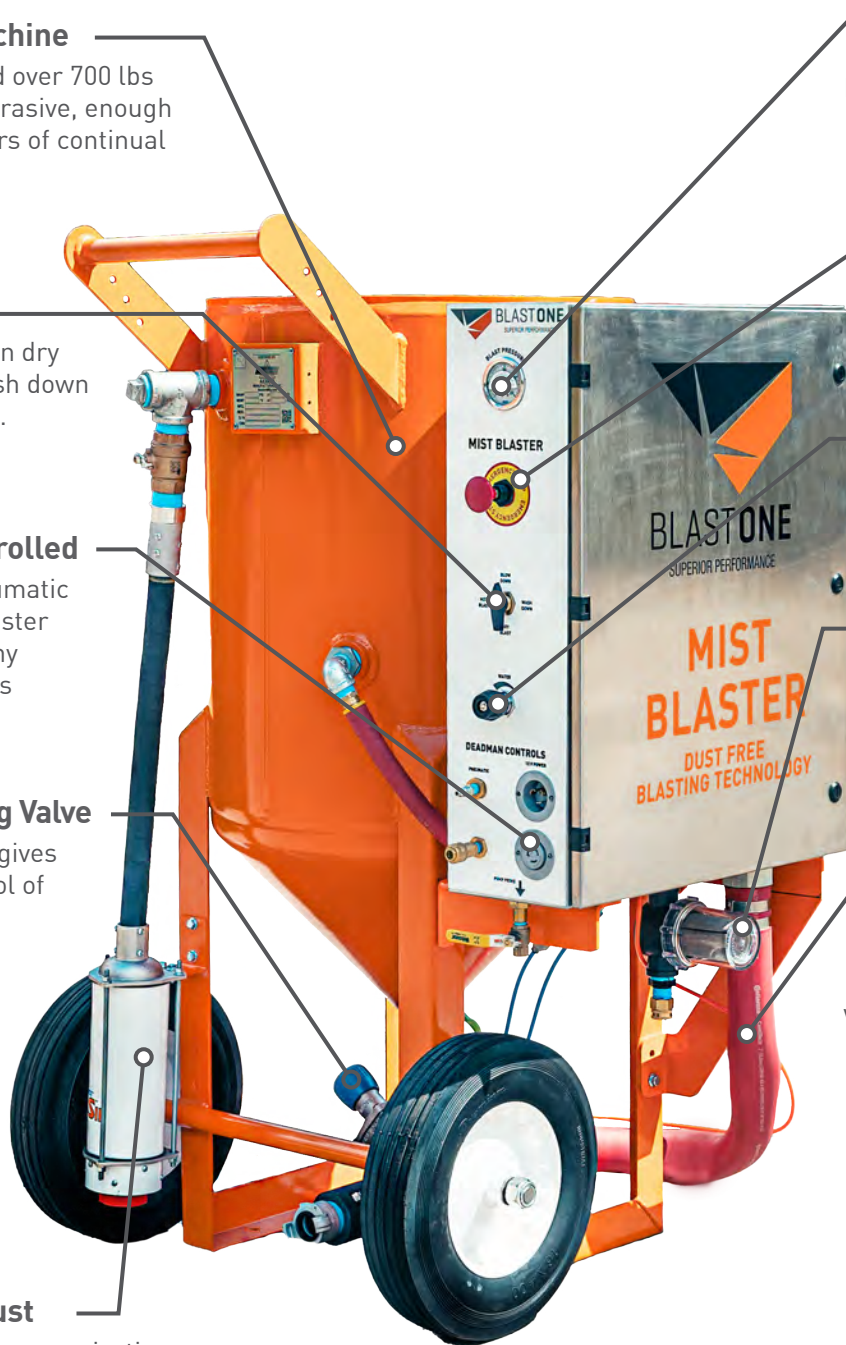
Full Flow Piping

Built with 2" full flow valves and hoses. The MistBlaster is the highest performing wet blast machine available.

Water Injection Block

(Not shown)

Dual ports, one for the mist and one for full flow wash down.



MISTBLASTER™ SINGLE OUTLET BLAST POT

SINGLE OUTLET 6.5 C.F. MISTBLASTER

New Equipment for New Needs

- ▶ 6.5 cuft capacity for up to 90 minutes blasting time between refills
- ▶ 4-in-1 versatility
 - ▷ Dry Blast
 - ▷ Mist Blast
 - ▷ Blow Down
 - ▷ Wash Down
- ▶ Pressure-hold technology
- ▶ Dual power deadman offers electric and pneumatic controls
- ▶ Optional skid mount
- ▶ Silenced blow down muffler, deadman cable and battery leads
- ▶ Includes 2" high flow piping for maximum blast efficiency with TeraValve Abrasive Metering Valve
- ▶ Water control between mist blasting at 1 pint per minute (1/8 gpm) up to wash down at 2 gallons per minute

Dimensions

42" x 48" x 58" (106cm x 122cm x 147cm)
548 lbs (249kg)



Pictured: MB25000

| PART NUMBER | DESCRIPTION |
|-------------|--|
| MB20000 | 6.5 cu ft MistBlaster Blast Machine, Single Outlet, Skid Mounted |
| MB20100 | MistBlaster Retrofit Kit for customer-supplied 6.5 cu ft Single-Outlet pot, Skid Mounted |
| MB25000 | 6.5 cu ft MistBlaster Blast Machine, Single Outlet with wheels |



Shop and learn more online.
Free shipping for orders over \$100
Scan for Pricing, Options and the Operation Manual

MISTBLASTER™ COMBO SKID

ALL-IN-ONE SOLUTION

Water Tank

(Not shown)

Built-in water tank with 50 gallon (190 litres) storage. Allows easy addition of rust inhibitor to stop flash rust.

Carbon Monoxide Monitor

Keep your operator safe by monitoring CO.

Breathing Air Filter

(Not shown)

Central place for operators to connect their breathing airlines.

MistBlaster Cabinet and Controls

For operation of all components of the MistBlaster.

Air Dryer

400 cfm Air Dryer removes moisture from your blast air. Keeps all the equipment you need on one skid.

Dual Air Inlet

Allows you to connect up to two different compressors if needed.

Forklift Pockets

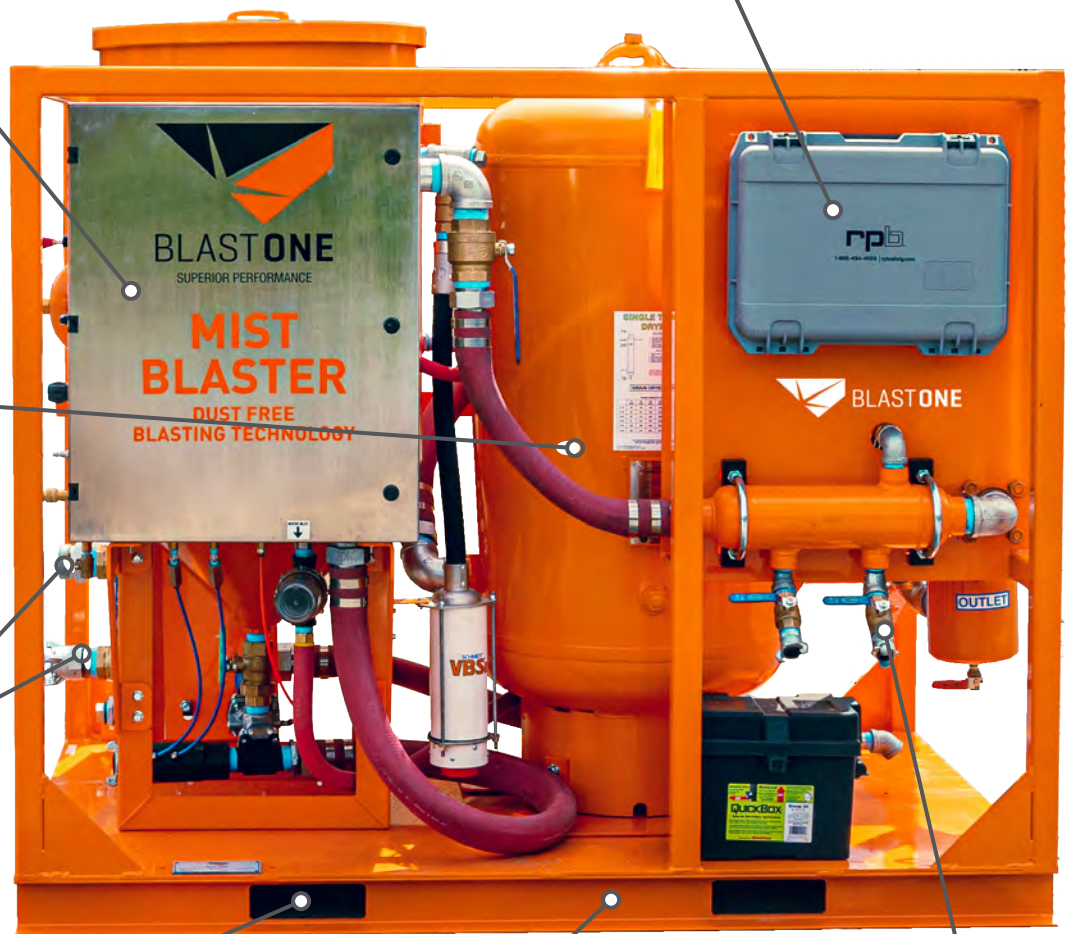
Rated for forklifts to make on site transport easier.

Robust Skid

Keeps all your equipment together in one skid, compact + protected.

Air Distributor Manifold

Central place with spare parts for connecting hand tools or additional equipment.



MISTBLASTER™ COMBO SKID

SINGLE OUTLET 6.5 MISTBLASTER COMBO SKID

The Ultimate in Convenience for a Single Operator

- ▶ Complete package with MistBlaster, Dryer and Breathing Air System
 - ▷ MistBlaster 6.5 cuft Single Outlet Blast Pot
 - ▷ Deliquescent Air Dryer 400 cfm
 - ▷ Breathing Air System (including Radex Breathing Air Filter and GX4 Carbon Monoxide Alarm)
- ▶ Compact skid-mounted package with:
 - ▷ Fork pockets for easy transportation
 - ▷ Crane rated frame
 - ▷ Fits in most standard 8ft truck beds
- ▶ On-board 50 gallon (190 litres) water tank (sufficient for 8 hour blast day) allowing you to easily add rust inhibitor
- ▶ Includes Response Deadman Controls, on-board battery and battery leads
- ▶ Industrial grade VBS muffler reduces blow down noise
- ▶ Skid mounted with sturdy frame to protect components
- ▶ Air distribution system: Dual inlet manifold and two auxiliary air outlets
- ▶ Includes 2" high flow piping for maximum blast efficiency with TeraValve Abrasive Metering Valve

Dimensions

72" x 47" x 60" (182cm x 120cm x 152cm)
2050 lbs (930kg)



Pictured: MB60000

| PART NUMBER | DESCRIPTION |
|-------------|---|
| MB60000 | 6.5 cu ft MistBlaster Combo Skid, Single Outlet. Includes Deliquescent Air Dryer, Water Tank, and Breathing Air System (CO monitor, BA Filter, and Nova 3 Respirator). Skid mounted |
| MB60010 | 6.5 cu ft MistBlaster Combo Skid, Single Outlet. Includes Deliquescent Air Dryer and Water Tank (w/o Breathing Air System). Skid Mounted |



Shop and learn more online.

Free shipping for orders over \$100
Scan for Pricing, Options and the Operation Manual

MEGA MISTBLASTER™

THE ULTIMATE COMBINATION BETWEEN HIGH PRODUCTION USING 4 BLASTERS ALL INDEPENDENTLY CONTROLLED USING MISTBLASTER TECHNOLOGY

Easy Refill with Bulk Bag Rack

4 pre-installed ports designed to allow the use of a bulk bag rack for fast refill of the pot.

Halok Closure

Patent pending Halok Safety Pot Closure is the only safe closure that guarantees that the lid cannot be opened while the vessel is pressurized.

160 cuft Capacity Pot

Gives you capacity for up to 8-10 tons of Garnet abrasive – enough for 4 blasters to blast all day.

Control Cabinet

All MistBlaster controls are enclosed in one robust cabinet, protected from the harsh conditions of the jobsite.

Four Outlets

(Not shown)

Four blasters can operate independently in any mode required: dry blast, mist blast, wash down, blow down.

Blast Line Timer

Blast timers allow you to keep track of how many hours you are blasting each day. It is also the central point to connect all your electric deadman cables.

Highway Trailer

Certified for highway driving. This trailer allows you to get around ease.

Spare Tire



MEGA MISTBLASTER™

4-OUTLET 160 C.F. MEGA MISTBLASTER™

Mist Blasting for up to 4 Operators or VertiDrive Robot

- ▶ Massive 160 cu ft capacity with the ability to hold up to 10 tons of garnet
- ▶ Each operator can utilize each function independently of the others
 - ▷ Dry Blast
 - ▷ Mist Blast
 - ▷ Blow Down
 - ▷ Wash Down
- ▶ Choice of mount configurations:
 - ▷ Highway certified 16k trailer with spare tire
 - ▷ Skid mounted
 - ▷ Legs only for trailer mounting
- ▶ Maximum productivity, highest flexibility, easiest preparation
- ▶ Includes Response Deadman Controls, on-board battery and battery leads for 4 operators
- ▶ Silent, safe blow down muffler
- ▶ Includes 2" high flow piping for maximum blast efficiency with TeraValve Abrasive Metering Valve
- ▶ Includes: Halok safety closure, blast timers, lights, dual ladders and provision for overhead storage rack

Dimensions
 109" x 99" x 125" (277cm x 251cm x 318cm)
 5500 lbs (2495kg)



Pictured: MB70030

| PART NUMBER | DESCRIPTION |
|-------------|---|
| MB70000 | 160 cuft Mega MistBlaster Blast Machine, 4-outlet. Mounted on shipping legs. |
| MB70020 | 160 cuft Mega MistBlaster Blast Machine, 4-outlet. Mounted on skid. |
| MB70030 | MOST POPULAR 160 cu ft Mega MistBlaster Blast Machine, 4-outlet. Mounted on Highway Trailer. |
| MB70100 | Mega MistBlaster Retrofit Kit for new Schmidt 4-outlet 160 cu ft pot. Limited Kit includes panels, hour meters, and controls but not valves. |
| MB70150 | Mega MistBlaster Retrofit Kit for used Schmidt 4-outlet 160 cu ft pot. Full Kit including all valves. |



Shop and learn more online.
 Free shipping for orders over \$100
 Scan for Pricing, Options and the Operation Manual

RELATED PRODUCTS



SnakeBite Blast Nozzles

The world's quietest blast nozzle!

- ▶ Up to 16dBA noise reduction
- ▶ Up to 45% less fatigue compared to standard blast nozzles
- ▶ Durable and lightweight

| PART NUMBER | DESCRIPTION | BEST SCENARIOS |
|-------------|-----------------------------|--|
| BNSBXQ1506 | #6 SnakeBite Flex Nozzle | Best for blasting in tight spaces and around obstacles like pipe and brackets |
| BNSBXQ1507 | #7 SnakeBite Flex Nozzle | |
| BNSBXQ1508 | #8 SnakeBite Flex Nozzle | |
| BNSBXQ6-1 | #6 SnakeBite XQ Nozzle | Best when you need a higher productivity quiet nozzle but don't have the air to use a Strike |
| BNSBXQ7-1 | #7 SnakeBite XQ Nozzle | |
| BNSBXQ8-1 | #8 SnakeBite XQ Nozzle | |
| BNSBXQ10-1 | #10 SnakeBite Strike Nozzle | Best for blasting acres of steel |



Ultra-Tuff Blast Nozzles

- ▶ Shock absorbent
- ▶ Urethane coat to ensure it doesn't break
- ▶ Lightweight - half the weight of conventional tungsten carbide abrasive blast nozzles

| PART NUMBER | DESCRIPTION | THREAD TYPE |
|-------------|------------------------------|-------------|
| BNULTRA3C | Ultra-Tuff Nozzle #3 (3/16") | Coarse 2" |
| BNULTRA4C | Ultra-Tuff Nozzle #4 (1/4") | Coarse 2" |
| BNULTRA5C | Ultra-Tuff Nozzle #5 (5/16") | Coarse 2" |
| BNULTRA6C | Ultra-Tuff Nozzle #6 (3/8") | Coarse 2" |
| BNULTRA7C | Ultra-Tuff Nozzle #7 (7/16") | Coarse 2" |
| BNULTRA8C | Ultra-Tuff Nozzle #8 (1/2") | Coarse 2" |

Nozzle Wear Size Analyzer Gauge

- ▶ Used to determine the internal diameter of a blast nozzle orifice
- ▶ Allows you to determine the level of wear of the blast nozzle
- ▶ Comes with a removable cap and crayon
- ▶ Has size markings to allow you to see quickly what size your nozzle is.

| PART NUMBER | DESCRIPTION |
|-------------|---------------------------------|
| INH131PBAG | Nozzle Wear Size Analyser Gauge |



RELATED PRODUCTS



ELECTRIC REMOTE CONTROL DEADMAN EXTENSION CABLE

RENT OR PURCHASE

- ▶ Abrasion-resistant, flex-coated control cable
- ▶ 12 Volt rated for electric deadman controls
- ▶ 3-Pin Twistlock connectors used for all deadman cables

| PART NUMBER | DESCRIPTION |
|---------------|--|
| DMECKC2552 | Standard 2 Core Cable – 2-Prong TwistLocks (55 ft) |
| DMECKC2553 | Standard 2 Core Cable – 3-Prong TwistLocks (55 ft) |
| DMECKC255HD | Extreme 2 Core Cable – 2-Prong TwistLocks (55 ft) |
| DMECKC3110-US | Standard 3 Core Cable – 3-Prong TwistLocks (110 ft) |
| DMECKC355 | Standard 3 Core Cable – 3-Prong TwistLocks (55 ft) |
| DMECKC355HD | Extreme 3 Core Cable – 3-Prong TwistLocks (55 ft) |
| DMECKC355WP | Standard 3 Core Cable – 3-Prong ScrewType (weatherproof) (55 ft) |



RESPONSE DEADMAN HANDLE

RENT OR PURCHASE

- ▶ #1 Deadman in the industry
- ▶ Larger internal ports make it faster acting, making it a safer handle
- ▶ Compact, slimline design – 30% easier than other handles to hold down
- ▶ Simple to make in-field repairs as required

| PART NUMBER | DESCRIPTION |
|-------------|--|
| DM2263002 | Pneumatic Response Deadman Handle |
| DM22634021 | Electric Response Deadman Handle with 3 pin plug |



LED BLAST LIGHT

- ▶ 6 LED's giving 1,325 lumens light output blast light
- ▶ Voltage range – 120 v AC or 12-28 v AC/DC
- ▶ Long lasting – the LED blast light lamps will last 20x the life of a halogen globe
- ▶ Hose mounted

| PART NUMBER | DESCRIPTION |
|-------------|---|
| BABL3475A | Western Technology 3475 LED Blast Light – 3m (10 ft) unfitted |



SAFETY WHIPCHECK FOR HOSE CONNECTIONS

- ▶ Use of a safety whipcheck restraint is mandatory on all hoses

| PART NUMBER | DESCRIPTION | SUITS HOSES |
|-------------|-------------|--|
| HFSCA1 | SCA-1 | Suits hoses 1/2" to 2 1/2" (15 mm to 60 mm) OD |
| HFSCA2 | SCA-2 | Suits hoses 2" to 3 1/2" (45 mm to 90 mm) OD |

RELATED PRODUCTS



GUARANTEEING **SAFER** JOB SITES

TWINLINE PNEUMATIC DEADMAN CONTROL HOSE

RENT OR PURCHASE

- ▶ Bonded, heavy duty, twin rubber hose, color coded for safety
- ▶ Used to supply air to the deadman handle
- ▶ Fitted standard with male-female threaded connectors
- ▶ 1/4" (6 mm) connectors on 'supply' red hose
- ▶ 1/8" (3 mm) connectors on 'return' green hose

| PART NUMBER | DESCRIPTION |
|-------------|---|
| AHRMS4055 | Twinline Pneumatic Deadman Control Hose - 55ft AV |

UNFITTED BULL HOSE - MEGAFLow™ AIR SUPPLY

- ▶ Supersynthetic oil resistant liner, durable UV resistant wrapped outer cover
- ▶ 300 psi pressure rated with 3:1 safety factor
- ▶ Non-fitted hose available in cols of 50ft
- ▶ Temperature range: -22°F to +158°F

| PART NUMBER | DESCRIPTION | EXTERNAL OD |
|-------------|------------------------------|-------------|
| BHBULL38 | MegaFlow Bull Hose 1-1/2" ID | 2-1/8" |
| BHBULL50 | MegaFlow Bull Hose 2" ID | 2-9/16" |
| BHBULL75 | MegaFlow Bull Hose 3" ID | 3-5/8" |

UNFITTED BLAST HOSE – WHIP SUPAFLEX 2-PLY

- ▶ Superior quality, lightweight and highly flexible sandblasting hose
- ▶ Anti-static, natural rubber liner
- ▶ Rated to minimum 175 psi – 3:1 safety factor

| PART NUMBER | EXTERNAL OD | INTERNAL ID | SUITS HOSES |
|-------------|-------------|-------------|--------------|
| BHS1350 | 1-3/16" | 1/2" | 50 ft (15m) |
| BHS2050 | 1 11/32" | 3/4" | 50 ft (15m) |
| BHS2550 | 1-9/16" | 1" | 50 ft (15m) |
| BHS32100 | 1-7/8" | 1-1/4" | 100 ft (30m) |
| BHS3250 | 1-7/8" | 1-1/4" | 50 ft (15m) |
| BHS40100 | 2-5/32" | 1-1/2" | 100 ft (30m) |
| BHS4050 | 2-5/32" | 1-1/2" | 50 ft (15m) |

RELATED PRODUCTS



RPB NOVA 3 SUPPLIED AIR RESPIRATOR

- ▶ Industry #1 for operator comfort
- ▶ Has motorcycle padding, weight is evenly distributed and turns with your head
- ▶ Sold with 28" nylon cape, breathing air tube, waist belt and buckle

| PART NUMBER | DESCRIPTION |
|-------------|------------------------------------|
| HLNV370250 | Nova 3 w/ Air Control Valve |
| HLNV370350 | Nova 3 w/ Cool Air Tube |
| HLNV370550 | Nova 3 w/ C40 - Heat and Cool Tube |



BLASTERALLS PREMIUM BLAST SUITS

- ▶ Tough and durable nylon construction offers excellent body protection while abrasive blasting
- ▶ Breathable cotton fabric back - less sweat, easier work
- ▶ Large interior pockets make it easy to store your daily supplies within reach

| PART NUMBER | DESCRIPTION |
|-------------|-------------------------|
| OPBN2 | Small BlasterAlls Suit |
| OPBN3 | Medium BlasterAlls Suit |
| OPBN4 | Large BlasterAlls Suit |
| OPBN5 | XL BlasterAlls Suit |
| OPBN6 | 2XL BlasterAlls Suit |
| OPBN7 | 3XL BlasterAlls Suit |
| OPBN8 | 4XL BlasterAlls Suit |



BLASTERALL GLOVES

- ▶ Made from genuine durable 'fine-grain' leather and Kevlar flock lined, giving comfort and dexterity
- ▶ Touch screen index finger tips allow operators to take and answer calls without glove removal
- ▶ Flexible design, allowing greater usability for blasting operators

| PART NUMBER | DESCRIPTION |
|-------------|---------------------------------|
| NA100-XS | X-Small (6) BlasterAll Gloves |
| NA100-SM | Small (7) BlasterAll Gloves |
| NA100-MED | Medium (8) BlasterAll Gloves |
| NA100-LG | Large (9) BlasterAll Gloves |
| NA100-XL | X-Large (10) BlasterAll Gloves |
| NA100-2XL | XX-Large (11) BlasterAll Gloves |

RELATED PRODUCTS

GUARANTEEING **CLEANER** JOB SITES

ACHIEVE A SUPERIOR CLEAN WITH GMA GARNET BLASTING ABRASIVE

Scientific testing proves GMA Garnet is cleaner to use, and its guaranteed purity will extend your coating life.

In independent laboratory testing, GMA Garnet has been found to contain no unwanted inclusions such as shells, dirt, seaweed or other contaminants – unlike other abrasives. This means that dust clouds are virtually eliminated during blasting.



INDIAN GARNET



GMA GARNET

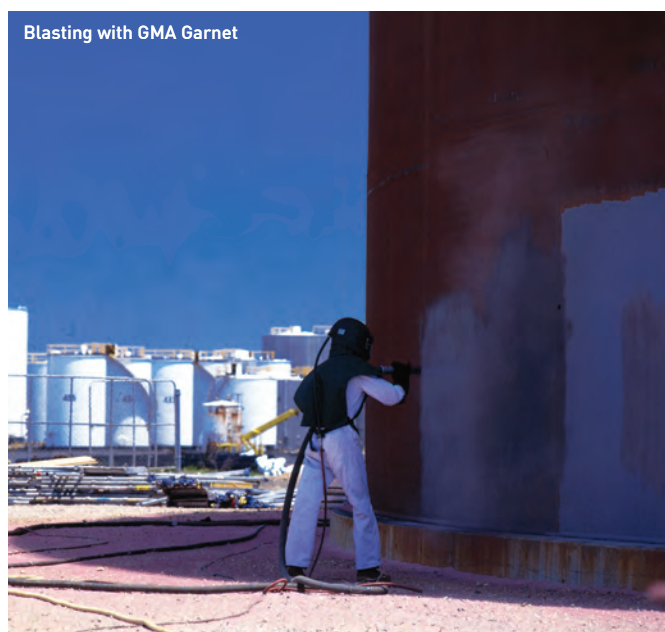
Do the 'shake test' to check the cleanliness of your current abrasive.

The photos (above) illustrate the results of shaking GMA Garnet and Indian Garnet in water together to separate the heavier abrasive from the lightweight contaminants which float in the water.

- Contaminated abrasive leaves a dirty surface, limiting coating life.
- Poorly graded abrasive slows productivity.



Blasting with a dusty abrasive



Blasting with GMA Garnet

BlastOne supplies GMA Garnet abrasive for all applications

GMA ExtremeBlast™

The coarsest grade for the toughest jobs

Removal of exceptionally resistant specialist coatings, heavy liners and marine foulings.

- High surface profile of 3.5-4.5 mil (90-115 µm)
- Blasting rates: Up to 280 ft²/hr (26 m²/hr)

| PART NUMBER | GMA EXTREMEBLAST DESCRIPTION |
|-------------|------------------------------|
| GX32200 | 2200lb Bulk Bag |
| GX34400 | 4400lb Bulk Bag |
| GX3552200 | 55lb Bags on 2200lb Skid |
| GX3554400 | 55lb Bags on 4400lb Skid |
| GX3BULK | Bulk Tanker |

GMA ToughBlast™

Engineered blend for superior cleaning on tough jobs

Fast removal of high build up coatings and/or heavy rust.

- High surface profile from 3.0-3.75 mil (75-95 µm)
- Blasting rates: Up to 370 ft²/hr (35 m²/hr)

| PART NUMBER | GMA TOUGHBlast DESCRIPTION |
|-------------|----------------------------|
| GX22200 | 2200lb Bulk Bag |
| GX24400 | 4400lb Bulk Bag |
| GX2552200 | 55lb Bags on 2200lb Skid |
| GX2554400 | 55lb Bags on 4400lb Skid |
| GX2BULK | Bulk Tanker |

GMA PremiumBlast™

Our versatile maintenance grade abrasive

Removal of medium coatings and/or medium-to-heavy rust.

- Efficiently produces surface profile from 3.0-3.75 mil (75-95 µm)
- Blasting rates: Up to 340 ft²/hr (32 m²/hr)

| PART NUMBER | GMA PREMIUMBLAST DESCRIPTION |
|-------------|------------------------------|
| GAPB2200 | 2200lb Bulk Bag |
| GAPB4400 | 4400lb Bulk Bag |
| GAPB552200 | 55lb Bags on 2200lb Skid |
| GAPB554400 | 55lb Bags on 4400lb Skid |

GMA SpeedBlast™

Fast cleaning general purpose abrasive

Fast removal of light-to-medium coatings and/or light-to-medium rust.

- Efficiently produces surface profile from 2.5-3.25 mil (65-85 µm)
- Blasting rates: Up to 350 ft²/hr (33 m²/hr)

| PART NUMBER | GMA SPEEDBLAST DESCRIPTION |
|-------------|----------------------------|
| GX12200 | 2200lb Bulk Bag |
| GX14400 | 4400lb Bulk Bag |
| GX1552200 | 55lb Bags on 2200lb Skid |
| GX1554400 | 55lb Bags on 4400lb Skid |
| GX1BULK | Bulk Tanker |

GMA NewSteel™

Our ideal abrasive for new steel, lightly rusted surfaces and thin coatings

Unrivaled speed in removing mill scale.

- Produces surface profile from 1.5-2.5 mil (40-65µm)
- Blasting rates: Up to 500 ft²/hr (46m²/hr)

| PART NUMBER | GMA NEWSTEEL DESCRIPTION |
|-------------|--------------------------|
| GANS2200 | 2200lb Bulk Bag |
| GANS4400 | 4400lb Bulk Bag |
| GANS552200 | 55lb Bags on 2200lb Skid |
| GANS554400 | 55lb Bags on 4400lb Skid |
| GANSBULK | Bulk Tanker |

GMA PrecisionBlast™

Our ideal abrasive for fast gentle cleaning on precision equipment and vulnerable surfaces

Removal of mill scale, glass etching and surface preparation of stainless steel, aluminum and titanium.

- Produces surface profile of 1.0-2.0 mil (25-50µm) or less
- Blasting rates: Up to 330 ft²/hr (31m²/hr)

| PART NUMBER | GMA PRECISIONBLAST DESCRIPTION |
|-------------|--------------------------------|
| GA1202200 | 2200lb Bulk Bag |
| GA1204400 | 4400lb Bulk Bag |
| GA120552200 | 55lb Bags on 2200lb Skid |
| GA120554400 | 55lb Bags on 4400lb Skid |
| GA120BULK | Bulk Tanker |

GMA SoftBlast™

Our softest product, enabling cleaning and polishing of the most delicate surfaces

Extremely delicate blasting, cleaning and polishing.

- Produces surface profile of 0.5-1.0 mil (12-25µm) or less
- Blasting rates : Up to 300 ft²/hr (28m²/hr)

| PART NUMBER | GMA SOFTBLAST DESCRIPTION |
|-------------|---------------------------|
| GA2002200 | 2200lb Bulk Bag |
| GA200552200 | 4400lb Bulk Bag |
| GA3502200 | 55lb Bags on 2200lb Skid |
| GA350552200 | 55lb Bags on 4400lb Skid |

AUSTRALIA

Adelaide | Darwin | Brisbane | Mackay |
Sydney | Newcastle | Melbourne |
Perth | Port Hedland

1800 190 190
sales.au@blastone.com

NEW ZEALAND

Auckland | Christchurch

0800 190 190
sales.nz@blastone.com

MALAYSIA

Kuala Lumpur

03 7725 0371
sales.my@blastone.com

NORTH AMERICA

Columbus | Los Angeles | Chicago |
Minneapolis | Hampton Roads |
Jacksonville | Houston

1 800 999 1881
sales@blastone.com